

## **Amplification of the Y1.7, Y1.8 and GAPDH Genes for Sex Identification in Human by Using Multiplex PCR**

Maytham Abdul kadhim Dragh\*<sup>1</sup>, Talib Ahmed Jaayid<sup>2</sup>, Zainab Sabeeh Alallak<sup>3</sup>

1-Biological Department, College of Science, University of Misan, Misan, Iraq

2-Animal Production Department, Agriculture College, Basrah University Iraq

3-Animal Production Department, Agriculture College, Misan University Iraq

(Corresponding author)

Tel: [+9647705577818](tel:+9647705577818) E. [maitham71dragh@yahoo.com](mailto:maitham71dragh@yahoo.com)

### **Abstract**

Pre- natal embryo sexing was done using circulatory blood of pregnant women at early stages of pregnancy, before the 4<sup>th</sup> month of pregnancy, in which 20 samples were obtained the objective of the study was to establish and evaluate multiplex PCR for detection of Y-chromosome – specific sequence of fetal DNA in maternal blood circulation during pregnancy in which identification of fetal gender become possible before the 4<sup>th</sup> month of pregnancy , this pre-test can be used to determine whether invasive prenatal diagnosis , such as amniocentesis and chorionic villi sampling should be performed on a fetus having a risk of X- linked recessive inheritance .the results of the study showed the appearance of a band with 57 bp (represent the primer GAPDH) In all samples which represented the control. The second band with the 100 bp (represent the primer Y1.7 and Y1.8) as well as the first band (57bp) appeared in male fetuses since it represent a gene found only on the Y chromosome . we concluded that the application of a noninvasive method like multiplex PCR by using maternal blood for embryo sex identification reveals a reliable and accurate method for prenatal diagnosis.

**Keywords :** Y1.7 and Y1.8, embryo sexing, PCR, GAPDH

## **1.Introduction:**

Fetal cells isolated from maternal blood represent a good source of fetal chromosome or DNA obtained non-invasively by maternal vein puncture that would avoid the complication and disadvantage of amniocentesis and chorionic villus sampling (CVS) which currently are the gold standard samples for prenatal diagnosis. The possible fetal cell types that can be isolated from maternal blood included trophoblasts, lymphocytes and nucleated red blood cells ( Pongsritasana et al.,2006).

### **1.1.Fetal Nucleated Red Blood Cells (FNRBCs):**

Fetal cells such as trophoblasts, lymphocytes and nucleated red cells (erythroblasts) have been shown to exist in maternal blood during pregnancy(Bianchi et al.,1990; Geifman-Holtzman et al.,1994 ). Nucleated red blood cells seem to be the promising cell type for prenatal diagnosis because they are relatively short-lived, and therefore the likelihood that these cells originated in prior pregnancies is reduced (Adinolfi ,1991; Geifman-Holtzman et al.,1994 ) It has previously been shown that fetal-nucleated red blood cells may be present in the maternal blood as early as 8 weeks of gestation, thus permitting first trimester diagnosis of fetal aneuploidy (Simpson and Elias,1993) . Retrieval of fetal cells from maternal blood can be enhanced by enrichment techniques involving fluorescence-activated cell sorting and magnetic-activated cell sorting (Price et al.,1991; Zheng et al.,1993) However, most enrichment and purification techniques are time-consuming and require expensive equipment.

### **1.2.Fetal DNA and PCR method :**

Recently, there has been much interest in the use of DNA derived from blood for the molecular diagnosis of genetic abnormalities and tumors(Mulcahy et al.,1996; Lo et al.,1997) Furthermore, it has been shown that fetus-specific DNA exists in maternal circulation(Lo et al.,1997; Zhong et al.,2000) and can be detected as early as 7 weeks of gestation(Lo et al.,1998; Al-Yatama et al.,2001a) These studies demonstrate that DNA from cells dying in the developing embryo passes through both placental and kidney barriers to appear in the maternal circulation; the size of DNA fragments in serum and plasma is sufficient to provide polymerase chain reaction (PCR) analysis, and the amount of fetal DNA in the mother's plasma is high enough to serve as a target for the detection of multiple as well as single copy genes (Al-Yatama et al.,2001 b).

## **2. Materials and Methods:**

This study was conducted in the genetic engineering laboratory/ biology department/ college of science/Misan University.

### **2.1. Samples:**

Peripheral blood cells from male donors were used for standardization Experiments, To obtain whole blood, peripheral blood (5–10 ml) was collected from 20 donors women carrying male fetuses during pregnancy. The samples were kept in well labeled EDTA tubes in refrigerator until DNA extraction step was began .

### **2.2. Isolation of DNA from Whole Blood :**

DNA from whole blood was isolated using standard procedures, In brief, 500 µl of whole blood was treated with red cell lysis buffer and centrifuged. The pellet was resuspended in 16 µl of x 5 proteinase-K buffer, 4 µl proteinase-K enzyme (10 mg/ml), 4 µl 20% sodium dodecyl sulfate and 30 µl distilled water. The tube was incubated with slow rotation at 55° C for 2–4 h. The DNA was then precipitated with 70% ethanol, the pellet air-dried, dissolved in 50 µl TE buffer and 10 µl used for PCR.

### **2.3. Primers for the Detection of Y-Chromosome specific sequence:**

To amplify Y-chromosome-specific DNA sequences, three pairs of primers were used , below a table showing the designation and the nucleotide sequence of the primers and the size of target DNA to be amplified:

The names and sequences of the primers used in the study as well as the size of DNA to be amplified and their location on the chromosomes. Y1.7 / Y1.8 are present in a single copy in the Y chromosome (Lo et al.,1990; Melkonyan et al.,1997).

### **2.4. PCR and Detection of Amplified DNA:**

By using the oligonucleotide primers described above, Y-chromosome- specific DNA fragments were amplified according to the standard procedures described previously by (Mustafa et al.,1995) In brief, each reaction mixture (100µl) contained 200 nM of each relevant primer and 2.5 U of Ampli Taq DNA polymerase, PCR buffer, dNTPS and target DNA. Amplification was carried out in a thermal cyclor (Perkin Elmer System 2400).Each cycle of the PCR amplification consisted of Denaturation step at 95°C for 15 seconds and Annealing step at 60°C for 30 seconds and Extention step at 72°C for 45 seconds The PCR program was 42 cycles. The amplified DNA was analyzed by agarose gel electrophoresis according to standard procedures(Mustafa et al., 1995) . The bands for specific DNA were observed under UV light and photographed.

### 3. Results:

The results showed that DNA fragments of expected size were amplified with all the three primer pairs in standard PCR (fig. 2). the results of the study showed the appearance of a band at the base pair 57 bp represent the GAPDH gene in all the samples which refer to the internal control . the second band appear on the 100 bp represent the Y1.7&Y1.8 gene only in male fetuses since it represent a gene found only on the Y chromosome .

Figure (1): PCR amplification of fetal DNA from maternal blood:1)standard marker, 2,4,5,6,8,9,11,12,15) women pregnant with female fetuses, only the GAPDH gene was amplified at the 57 bp.(one band); 1,3,7,10,14) women pregnant with male fetuses, both the GAPDH and Y1.7, Y1.8 gene was amplified at the 57 and 100 bp respectively( two bands).

### 4. Discussion:

In this study, we have demonstrated the presence of Y-chromosome-specific DNA sequences in the maternal specimens of women bearing male fetuses by using highly sensitive multiplex PCR. In previous reports, in which standard PCR was used, it was shown that Y-chromosome specific DNA sequences were detected in 80–87% of maternal plasma samples during pregnancy(Mulcahy et al.,1996; Honda et al.,2001). Our results demonstrate improved sensitivity by showing the detection of Y-chromosome-specific DNA in 96% of plasma specimens from pregnant women bearing male fetuses. This could have been due to the improved sensitivity of multiplex PCR as compared to standard PCR. This is because in multiplex PCR the initial starting template for the second round of PCR is actually the PCR product, and therefore the target region is in high copy number compared to the genomic template used in the first round of PCR(Al-Yatama et al.,2001 b) These results could be explained on the basis that the sensitivity of amplification of a target in PCR, in addition to target copy number, also depends on the primers and size of the amplified DNA etc.( Mustafa et al., 1999) The multiplex PCR results using specimens from pregnant women suggest that whole blood, serum and plasma samples are useful in determination of fetal sex and could be applicable to noninvasive prenatal diagnosis of genetic Y-linked abnormalities, single gene disorders or determination of fetal sex etc.(Al-Yatama et al., 2001 b).

### 5. Conclusion:

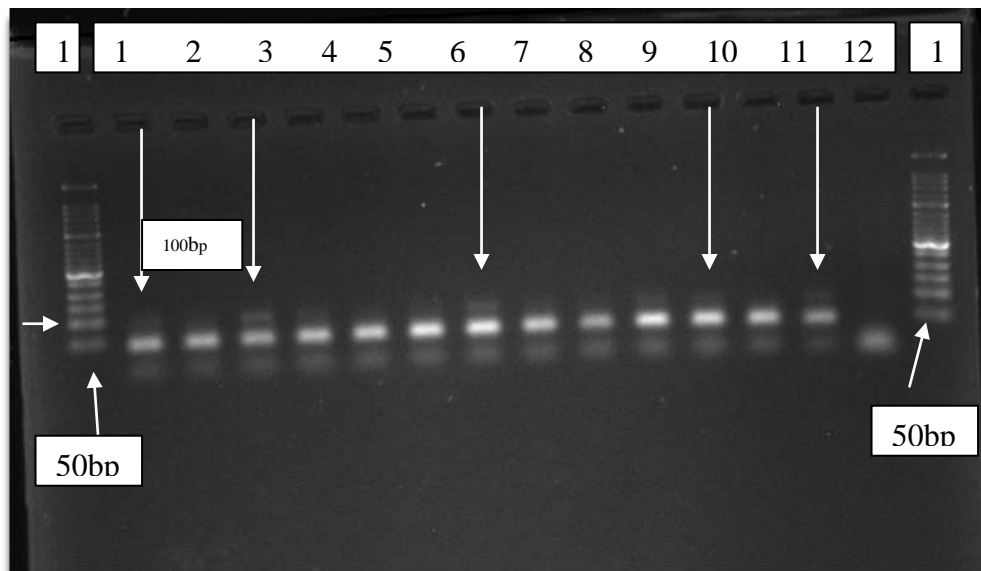
Our results suggest that highly sensitive multiplex PCR was reliably used in fetal sex determination and prenatal diagnosis.

### 6. Acknowledgments:

We would like to express our gratitude to the physiology lab. / department of animal production / college of Agriculture / Misan University and Genetic Engineering lab. / department of biology / college of Science / Misan University.

### 7. References:

- Adinolfi, M. (1991).** On a noninvasive approach to prenatal diagnosis based on the detection of fetal nucleated cells in maternal blood samples. *Prenat Diagn*;11:799–804.
- Al-Yatama MK, Mustafa AS, Ali S, Abraham ; S, Khan Z, Khaja N (2001b).** Detection of Y-chromosome-specific DNA in the plasma and urine of pregnant women using nested polymerase chain reaction. *Prenat Diagn*;21:399–402.
- Al-Yatama, M.K ., Omu A.E., Ali S.; Abraham S.; Zohra K. and Khaja N.(2001a).** Establishment and Evaluation of polymerase chain reaction for detection of Y- chromosome specific fetal DNA in maternal blood circulation during pregnancy and after delivery. *Med. Principles Pract.*10: 171-176.
- Bianchi DW, Flint AF, Pizzimenti MF, Knoll JH, Latt SA (1990).** Isolation of fetal DNA from nucleated erythrocytes in maternal blood. *Proc Natl Acad Sci USA*;87:3279–3283.
- Geifman-Holtzman O, Blatman RN, Bianchi DW(1994).** Prenatal genetic diagnosis by isolation and analysis of fetal cells circulating in maternal blood. *Semin Perinatol*;18:366–375.
- Honda H, Miharuru N, Ohashi Y, Ohama K (2001).** Successful diagnosis of fetal gender using conventional PCR analysis of maternal serum. *Clin Chem*;47:41–46.
- Lo YM, Corbetta N, Chamberlain PF, Rai V, Sargent IL, Redman CW, Wainscoat JS (1997).** Presence of fetal DNA in maternal plasma and serum. *Lancet*;350:485–487.
- Lo YM, Tein MS, Lau TK, Haines CJ, Leung TN, Poon PM, Wainscoat JS, Johnson PJ . Chang AM, Hjelm NM (1998).** Quantitative analysis of total DNA in maternal plasma and serum: Implications for noninvasive prenatal diagnosis. *Am J Hum Genet*;62:768–775.
- Melkonyan HS, Lichtenstein AV, Umansky SR: DNA from dying cells passes through the kidney barrier in a polymeric form suitable for PCR analysis (1997).** A perspective diagnostic tool; in *Proc Diagnostic Gene Detection and Quantitation Technologies*, Int Business Commun, San Diego, June 1997.
- Mulcahy HE, Croke DT, Farthing MJ (1996).** Cancer and mutant DNA in blood plasma. *Lancet*;348:628.
- Mustafa AS, Abal AT, Chugh TD (1999).** Detection of Mycobacterium tuberculosis complex and non tuberculous mycobacteria by multiplex polymerase chain reaction *East Mediterr Health J*;5:61–70.
- Mustafa AS, Ahmed A, Abal AT, Chugh TD (1995).** Establishment and evaluation of a multiplex polymerase chain reaction for detection of mycobacteria and specific identification of Mycobacterium tuberculosis complex. *Tuber Lung Dis*;76:336–343.
- Pongsritasana T; Wongratanacheewin S; Prasertcharoensuk V. and Sermswan R.W. (2006).** Isolation of Fetal Nucleated Red Blood Cell from Maternal Blood using Immunomagnetic Beads for Prenatal Diagnosis. *ASIAN PACIFIC JOURNAL OF ALLERGY AND IMMUNOLOGY* . 24: 65-71
- Price JO, Elias S, Wachtel SS, Klinger K, Dockter M, Tharapel, A Shulman LP, Phillips OP, Meyers CM, Shook D, Simpson JL (1991).** Prenatal diagnosis with fetal cells isolated from maternal blood by multiparameter flow cytometry. *Am J Obstet Gynecol*;165:1731–1737.
- Simpson JL, Elias S: Isolating fetal cells from maternal blood (1993).** Advances in prenatal diagnosis through molecular technology. *JAMA*; 270:2357–2361.
- Zheng YL, Carter NP, Price CM, Colman SM, Milton PJ, Hackett GA, Greaves MF, Ferguson-Smith MA (1993).** Prenatal diagnosis from maternal blood: Simultaneous immunophenotyping and FISH of fetal nucleated erythrocytes isolated by negative magnetic cell sorting. *J Med Genet*;30:1051–1056.
- Zhong, XY, Holzgreve W, Hahn S. (2000).** Detection of fetal rhesus D and sex using fetal DNA from maternal plasma by polymerase chain reaction. *BJOG*;107:766–769.



**Figure (1):** PCR amplification of fetal DNA from maternal blood:1)standard marker, 2,4,5,6,8,9,11,12,15) women pregnant with female fetuses, only the GAPDH gene was amplified at the 57 bp.(one band); 1,3,7,10,14) women pregnant with male fetuses, both the GAPDH and Y1.7, Y1.8 gene was amplified at the 57 and 100 bp respectively( two bands).

Name	Sequence of primer	Base pair	GenBank
Y1.7	5' - CATCCAGAGCGTCCCTGGCTT -3'	100 bp	AF505528.1
Y1.8	5' - CTTTCCACAGCCACATTTGTC -3'		
GAPDH	5' - CCTAGTCCCAGGGCTTTGATT - 3'	57 bp	NM_002046
GAPDHα	5' - CCCACACACATGCACTTACC - 3'		

(Fig. 2).The results showed that DNA fragments of expected size were amplified with all the three primer pairs in standard PCR